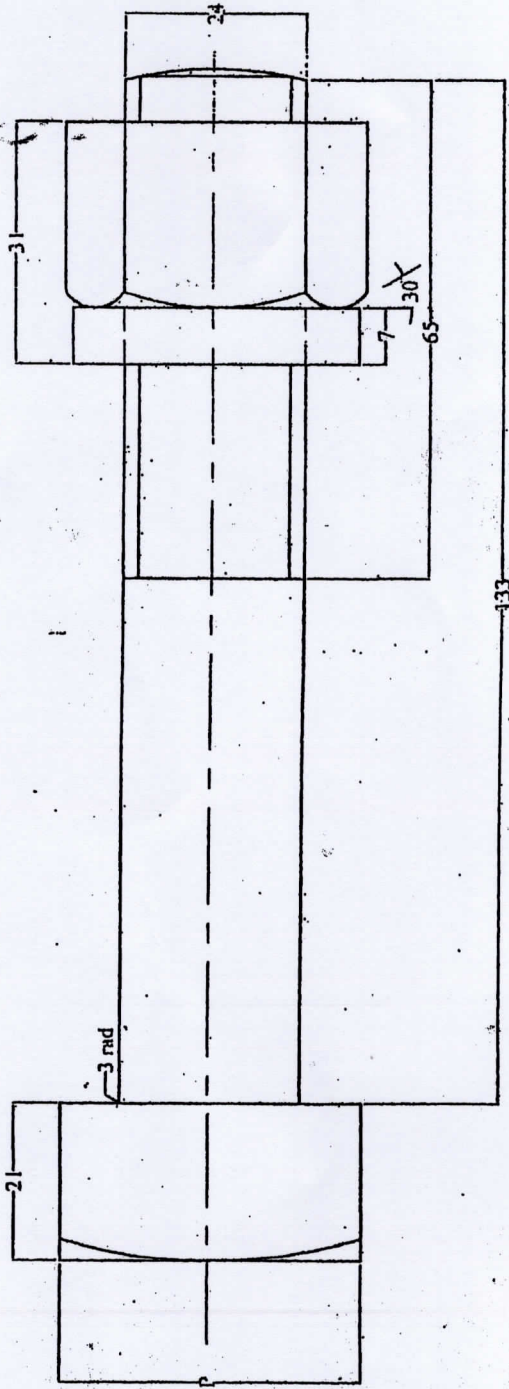


# FISH BOLT AND NUT FOR B.S.90 A RAIL

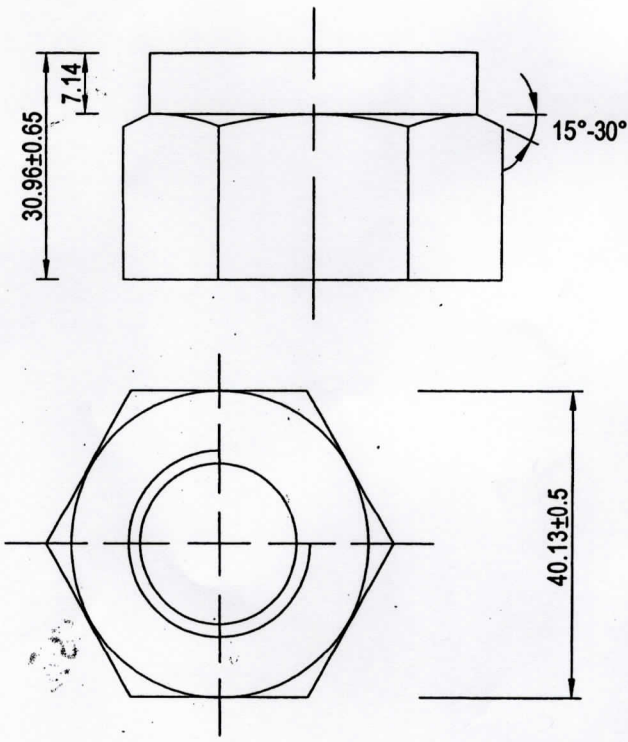
Drg. No. 19994/B



P - max. - 40 (width across flats of hexagon nut and  
 min. - 39.6 square head of bolt and diameter of  
 neck on nut)

Note:  
 All dimensions are mm

<b>SLR</b>	DRAWN BY <i>Sunil Perera</i>	SRI LANKA RAILWAYS WAY & WORKS DEPARTMENT
FISH BOLT & NUT FOR 90-A Lb RAIL	CHECKED BY <i>Samarakoon</i>	Drg.No.19994/B   Date:07.12.2010
SCALE: FULL SIZE	D.O.A. <i>[Signature]</i>	<i>[Signature]</i> CHIEF ENGINEER
	APPROVED BY <i>[Signature]</i>	



**NUT**

**TECNICAL REQUIREMENTS**  
 1. Hardness : 170-302HV  
 2. Coating : plain  
 REFERENCE DRG. NO: 19994/B

<p><b>TYPE PLAN</b></p> <p><b>90lbs Nut</b></p> <p>SCALE: 1:1</p>	<p>DRAWN BY: HASITHA <i>[Signature]</i></p>	<p><b>SRI LANKA RAILWAYS</b></p> <p>WAY &amp; WORKS DEPARTMENT</p>	
	<p>CHECKED BY: <i>[Signature]</i></p>	<p>DRG NO : 22941</p>	<p>DATE : 2023 MARCH</p>
	<p>D.O.A: <i>[Signature]</i></p>	<p><i>[Signature]</i></p> <p>CHIEF ENGINEER</p>	
	<p>S.E. <i>[Signature]</i></p>		
	<p>APPROVED BY: <i>[Signature]</i></p>		